

# 2025 / Q4 Investor Conference Presentation



**Presenter: Vincent Ho Spokesperson**

**2025.11.19**

# Outline

## 01. Summary of Operations

## 02. Financial Analysis

## 03. Missioncare 50 Healthy Taiwan

# 01. Summary of Operations

TAOYUAN

桃園

- 敏盛醫院 x3
- 躍獅藥局 x13
- 精準健診
- 敏成健康科技
- 敏盛智慧健康管理中心
- 智醫康寓
- 嘉健健康管理中心
- 敏盛健康福祉學院

CHANGHUA

彰化

- 躍獅藥局 x2

YUNLIN

雲林

- 躍獅藥局 x1

CHIAYI

嘉義

- 躍獅藥局 x1

KAOHSIUNG

高雄

- 躍獅藥局 x3

YILAN

宜蘭

- 躍獅藥局 x1

NEW TAIPEI

新北

- 躍獅藥局 x27
- 永耕健診
- 方鼎資訊

NANTOU

南投

- 躍獅藥局 x1

TAITUNG

台東

- 躍獅藥局 x1



14 縣市 | 125 POCs

TAIPEI

台北

- 哈佛健診 x1
- 躍獅藥局 x43
- 醫電數位轉型

HSINCHU

新竹

- 竹科員工診所
- 躍獅藥局 x4

MIAOLI

苗栗

- 為恭健診
- 躍獅藥局 x2

TAICHUNG

台中

- 盛雲藥品
- 躍獅藥局 x8

TAINAN

台南

- 躍獅藥局 x2

# Highlights of the 2025 business plan.

- ◆ Continue restructuring the operations and integrating the performance of subsidiaries.
- ◆ The core business is developing steadily, with the medical sector growing increasingly robust.
- ◆ Strengthen the professional capabilities and overall management efficiency of each business entity.
- ◆ Support policy objectives and fully promote a Healthy Taiwan.
- ◆ Establish the College of Health and Well-being to actively cultivate innovative nursing talent.

**“Missioncare’ s 50 Years of Dedicated Care, Paving the Way for a Century of Smart Health Innovation”**

# Leading a New Chapter in Healthy Taiwan: ShareHope Comprehensive Strategy

健康台灣  
Missioncare  
敏盛醫療

H 哈佛健診  
新竹科學園區員工診所  
精準健康  
Preget Medical Health Co., Ltd.

Health Promotion and Chronic  
Disease Prevention  
Personalized Health Screenings,  
Corporate Wellness Programs, Chronic  
Disease Management

Strengthening the National Cancer  
Prevention and Control Program  
Advanced Screening, Integrated  
Health Checkup Reports, Follow-up  
and Case Management

MS 敏盛智慧健康管理中心  
Min-Sheng Smart Health Management Center

Healthy Taiwan Deep Engagement Initiative  
Community Health Days, Health Knowledge  
Communities  
Ensuring the Sustainable Development of  
National Health Insurance  
Digital Integration, Health Subscription Services  
Smart Medical and Integrated Health Care  
AI Predictive Platform, Personal Health CloudAI

MS 敏盛綜合醫院  
Min-Sheng General Hospital

Enhancing Indigenous Health Services  
Telemedicine Consultations, Health Education  
Resources in Native Languages  
Comprehensive Enhancement of Pediatric  
Medical and Health Care  
Development of Specialized Screening Zones,  
Pediatric Nutrition and Health Education

Improving the Working Environment for  
Healthcare Professionals  
Employee Health Checkups, Psychological  
Support Services

智醫康寓  
HEALTHY RESIDENCE

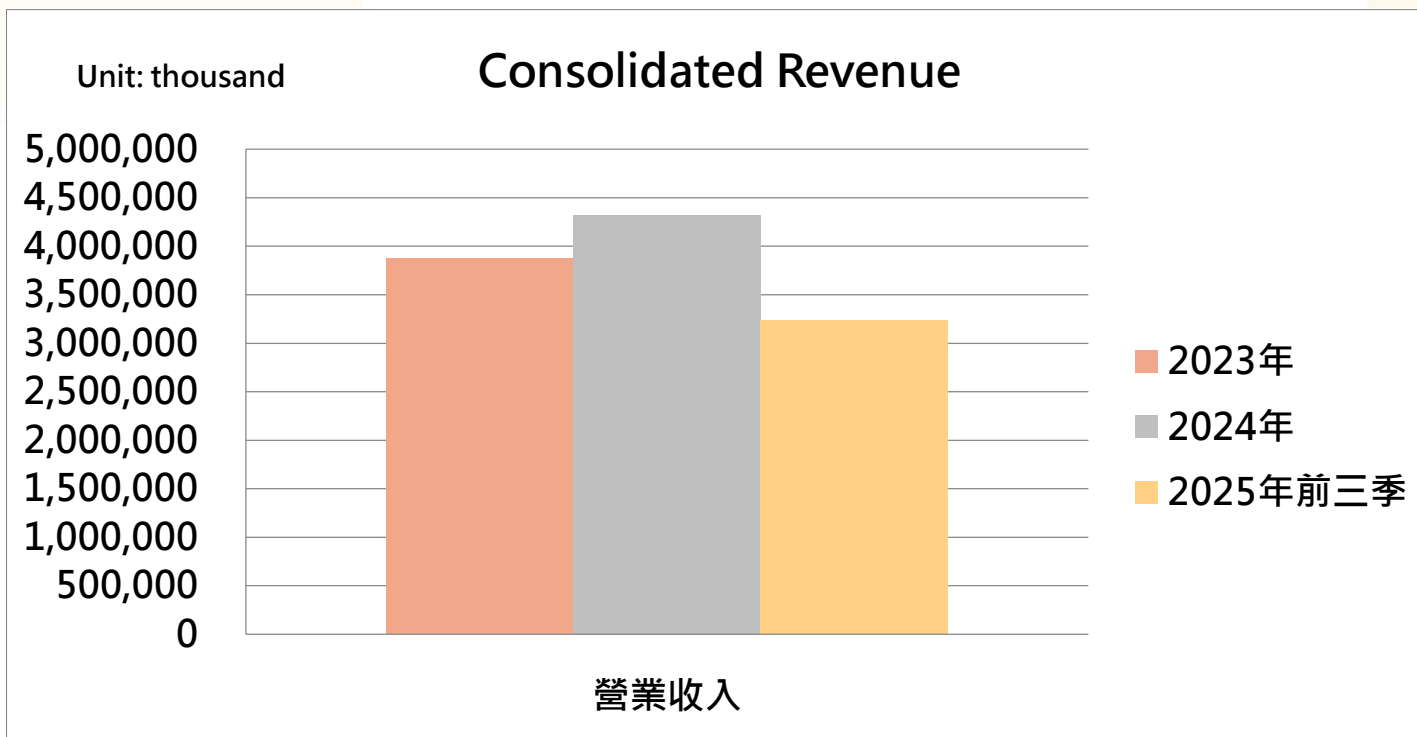
YES CHAIN 躍獅連鎖藥局

Integration of Medical Care and Long-Term Care  
Pharmacy Referral Platform, Discharge Care Planning, Health  
Assessments for the Elderly  
Enhancing Mental Health Support  
for the Public  
Remote Psychological Counseling,  
Mental Health Seminars  
Palliative Care  
ACP and Health Checkup Integration,  
Family Support Program

橘字為健康台灣發展11項主軸

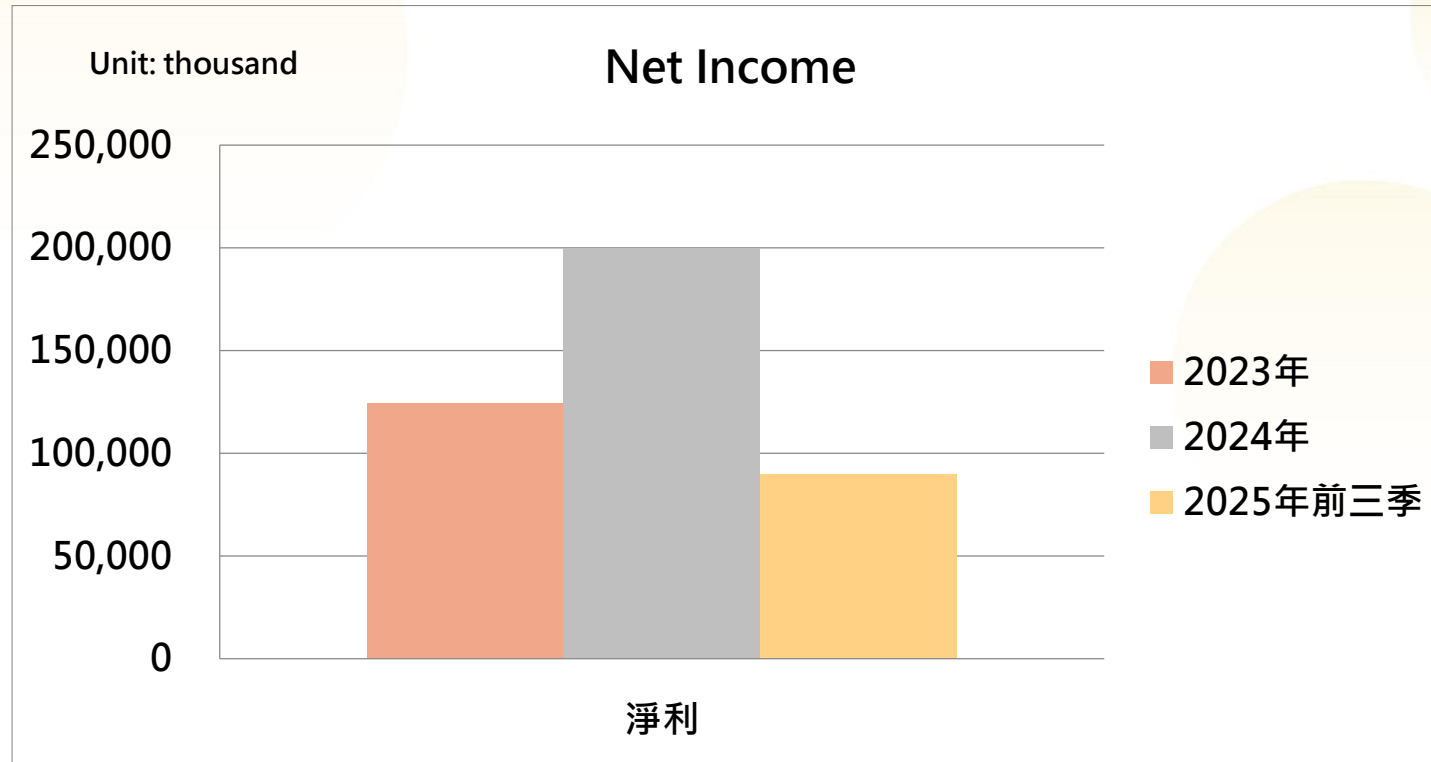
## 02. Financial Analysis

# Consolidated Revenue in the past 3 years



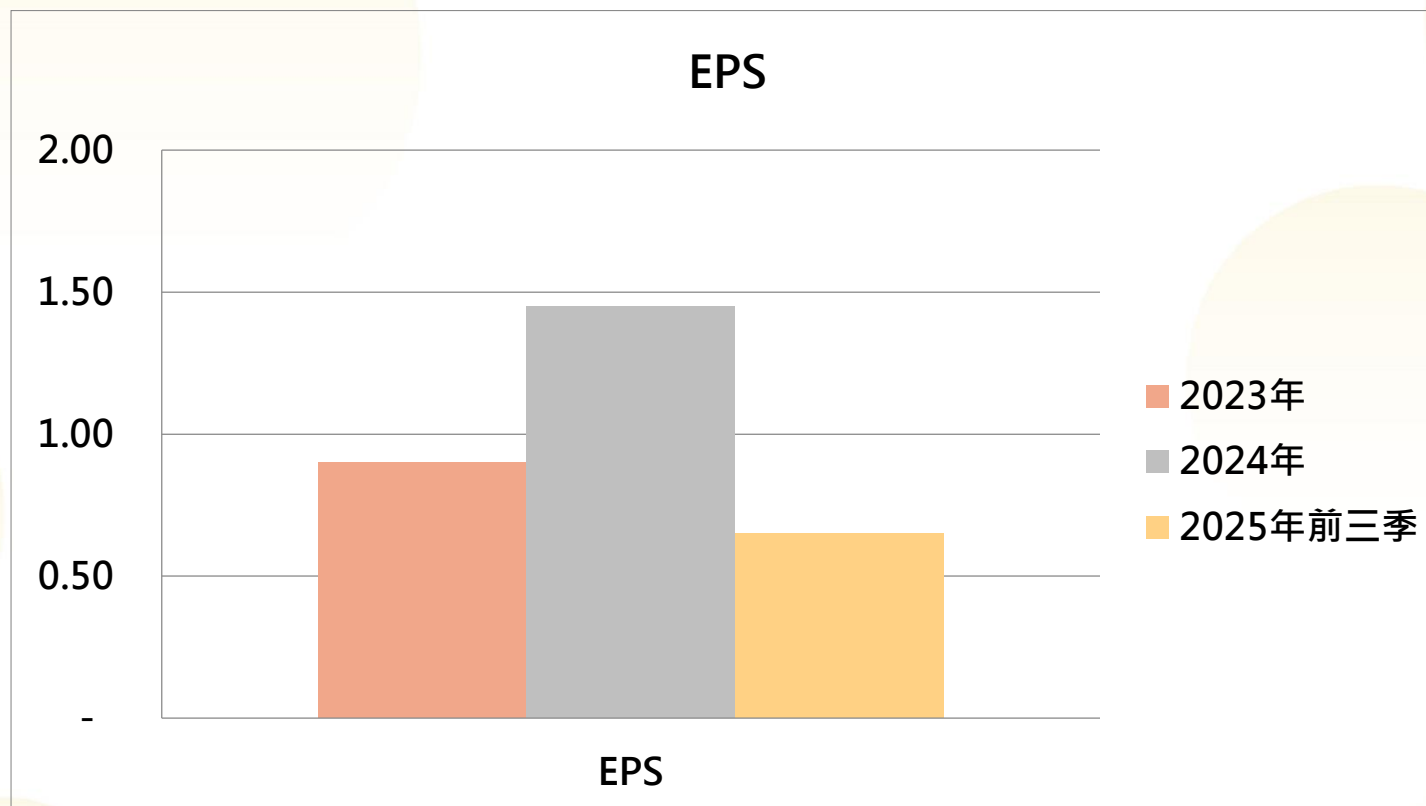
	Total
2023	3,873,384
2024	4,325,831
2025Q1-Q3	3,231,727

# Net income in the past 3 years



	Total
2023	124,557
2024	200,097
2025 Q1-Q3	89,967

# EPS in the past 3 years



	Total
2023	0.90
2024	1.45
2025 Q1-Q3	0.65

## 03. Missioncare 50 Healthy Taiwan

# The New Era of Smart Healthcare: Bridging the Distance in Care

## Hospital-at-Home

<https://www.ankecare.com/article/2626-2023-07-13-17-02-21>

- Director-General of the National Health Insurance Administration, Shih Chung-liang: Expanding Home-Based Medical Care – Pilot Program for At-Home Hospitalization to Launch Next Year

Facing the challenges of an aging population, Taiwan must address the limitations in hospital and long-term care facility bed capacity. The development of home-based medical care has become a top priority. Since 2015, the National Health Insurance Administration (NHIA) has promoted the Integrated Home Healthcare Program (commonly referred to as the "Home Care Integration Plan"), which connects medical professionals and healthcare institutions to encourage the formation of community-based integrated care teams.

### Establishing an Innovative Health Tech Information Platform

Patients receiving home-based medical services are often cared for by various medical and professional teams. The key challenge is how to vertically integrate medical resources across different levels. To address this, the NHIA is planning to establish an innovative digital information platform, designed with a patient-centered approach. The goal is to integrate electronic medical records, long-term care services, and telemedicine, creating a data-sharing system that facilitates both healthcare provision and interdisciplinary collaboration.

Shih Chung-liang also expressed hope that the platform will eventually link long-term care data with telemedicine services, expanding the scope and maximizing the impact of the technological infrastructure.



## National Health Insurance Digital Upgrade Plan for Medical Equity (2024–2027)

### 願景

- 透過健保數位升級，提升健保資訊效能與安全，提供國人適切、可近及永續的全人全程健康照護。
- 擴大公私部門協力合作，加速醫療照護數位轉型。
- 完善資料治理，建立健保大數據資料生態系。

SUSTAINABLE DEVELOPMENT GOALS

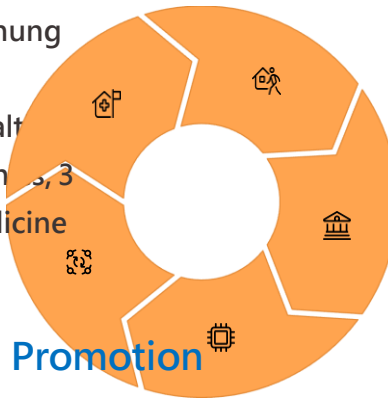


# Deep Collaboration Projects

## Using Missioncare General Hospital as the Core — Integrating and Sharing Resources to Build a Comprehensive Healthcare Network, Providing Holistic Health Services

### Integrated Medical Care

Partner hospitals: Longtan Missioncare Hospital, Dayuan Missioncare Hospital, Yi-Ren Hospital, Chung Mei Hospital, and 10 other community hospitals. Network includes: 6 dental clinics, 3 health screening clinics, 3 obstetrics and gynecology clinics, 3 internal medicine clinics, and 1 occupational medicine clinic — a total of 16 clinics.



### Community and Remote Area Health Promotion

Collaborations with: Lakeside Health Center, Taoyuan City Women and Children Health Center, Dayuan Health Center, Fuxing District Indigenous Health Development Association, Ministry of Culture's Indigenous Health Programs

### Medical and Long-Term Care Integration

Partners include: Anxin Nursing Home, Huixin Nursing Home, Yi-De Care Center, Joy Senior Community Care Series, among others — totaling 23 long-term care facilities.

### Talent Development and Research

Collaboration with National Taiwan Sports University to cultivate professional healthcare and wellness talent. Jointly conducting medical research to enhance the quality of community healthcare services.

### Technology and Medical Integration

Partners include: Foundry Information, Yi-De Technology, and Formosa Information — healthcare technology companies driving digital health innovation.

# Missioncare Smart Integrated Healthcare System

## Ownership • Trust • Co-Creation

Taiwan Biobank  
 Health Data  
 Dynamic Consent  
 Platform



Home Care + Long-Term Care 3.0

Microsoft Cloud

Dynamics 365 • Microsoft 365  
 Power Platform • AI Copilot



CHIEF | 是方

Devices and Systems  
 (Residents/  
 Institutions):



Dr.PAD

FaceHeart

WinBody

CoDoctor

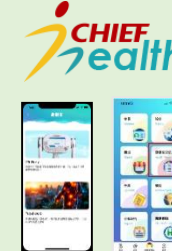
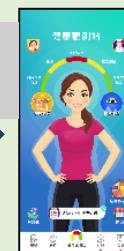
Others ...

Data  
 Input



Data Integration + AI Analysis

Data  
 Output



Health Data & Measurement  
 Storage + TSBB



Outpatient  
 Service App

Jotangi  
 依德科技



•Appointment  
 BookingVideo  
 ConsultationsHealth  
 Management  
 EducationConsultation  
 SummariesOutpatient  
 Summaries

Data  
 Exchange

WebHIS  
 system

TECHGROUP  
 方鼎資訊股份有限公司



Tiered Health  
 Screening System  
 Clinic  
 Information Input  
 System

Data  
 Input



<https://healthme.tw/>



Microsoft Fabric

Smart FHIR / TW Core IG

Centered on the patient: integrated  
 electronic medical records combining  
 HIS + NIS + LIS + EHR + AI

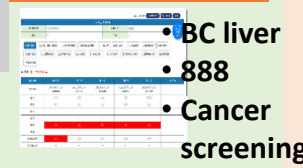
Data  
 Exchange



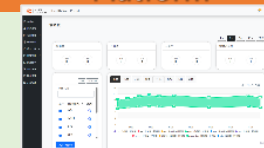
Consultation Recording +  
 Visit Summary



Chronic Disease  
 Management Platform



Personal Interaction  
 Platform



AI  
 Examination  
 Reports

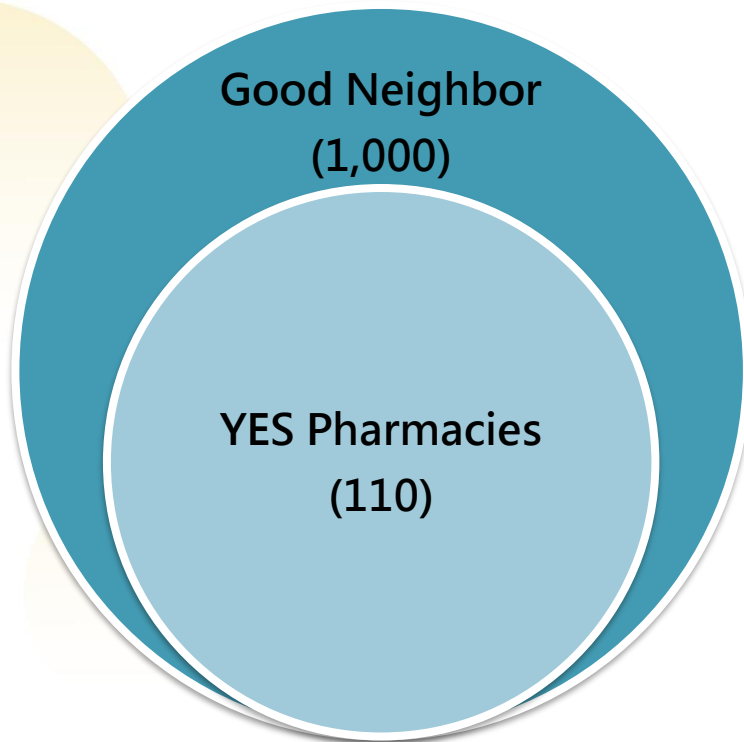
- Fundus (eye) exam
- Bone density
- Thyroid ultrasound
- Mammogram
- Lung imaging
- Heart ultrasound
- Sleep monitoring
- Gait/balance
- Foot pressure measurement

Deep Integration  
 Plan – Community  
 Clinics

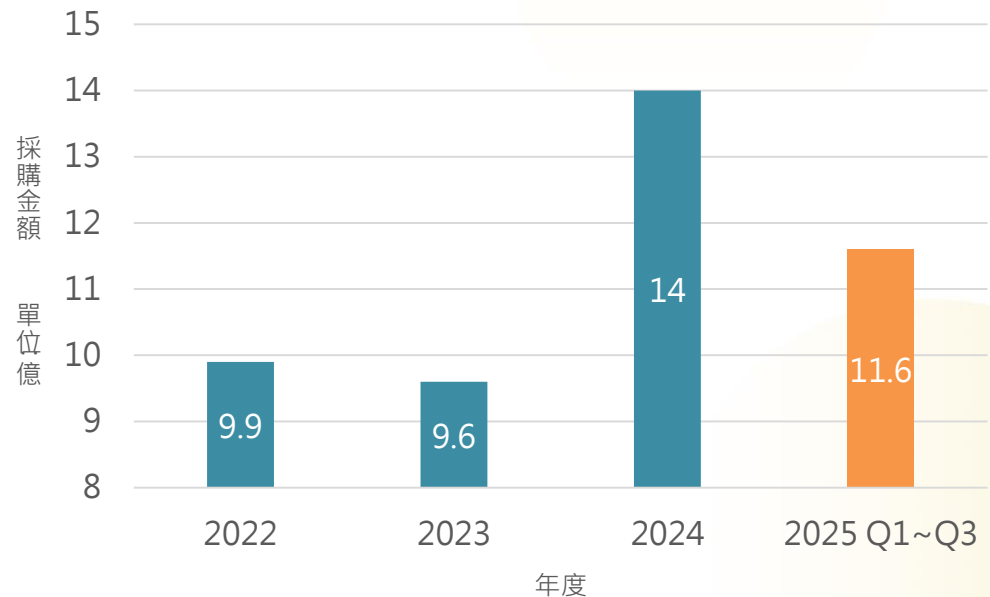
# YES Chain Pharmacy

# 2025 YES Chain Development Highlights

- The Good Neighbor Pharmacy Alliance has reached its initial scale target, and the advantages of bulk purchasing are gradually emerging. In addition to tangible product sales, intangible offerings—such as advertising and cross-industry collaborations—have also begun to gain traction.



## Historical Procurement Amount



# 2025 YES Chain Development Highlights (continued)

## 聯採的「終局思維」

核心模式 (藥局聯採)

### 核心模式：擴大藥局採購規模

此模式專注於整合聯盟內「藥局」的採購需求，以巨大的訂單量作為籌碼，向原廠或代理商爭取更優惠的藥品價格。這是 GPO 的經典應用，也是聯盟當前的業務重心。



## Pharmacy-Centric Thinking: The True Value of Joint Procurement

From the perspective of a “pharmacy-centric mindset,” the value of joint procurement goes far beyond short-term “drug price differences.” Its true strategic significance lies in:

- **Building a Scalable Platform:** Developing a powerful platform that connects hundreds or even thousands of pharmacies, equipped with strong collective purchasing power.
- **Integrating Procurement Data:** Establishing a legitimate and transparent (de-identified) pharmaceutical procurement database — a valuable foundation for future data-driven services.
- **Empowering Pharmacists Professionally:** Streamlining the procurement process to free pharmacists from price and inventory management burdens, enabling them to focus on providing higher-value professional services.

# Thank You for Listening