

Missioncare

Honesty Originality Progression Excellence Sharing

Taipei Exchange Investors Conference of 2023 (2022/Q4 Financial Report)

Investor Relations POC: Vincent Ho Spokeperson
2023. 04. 13

Outline of the Presentation

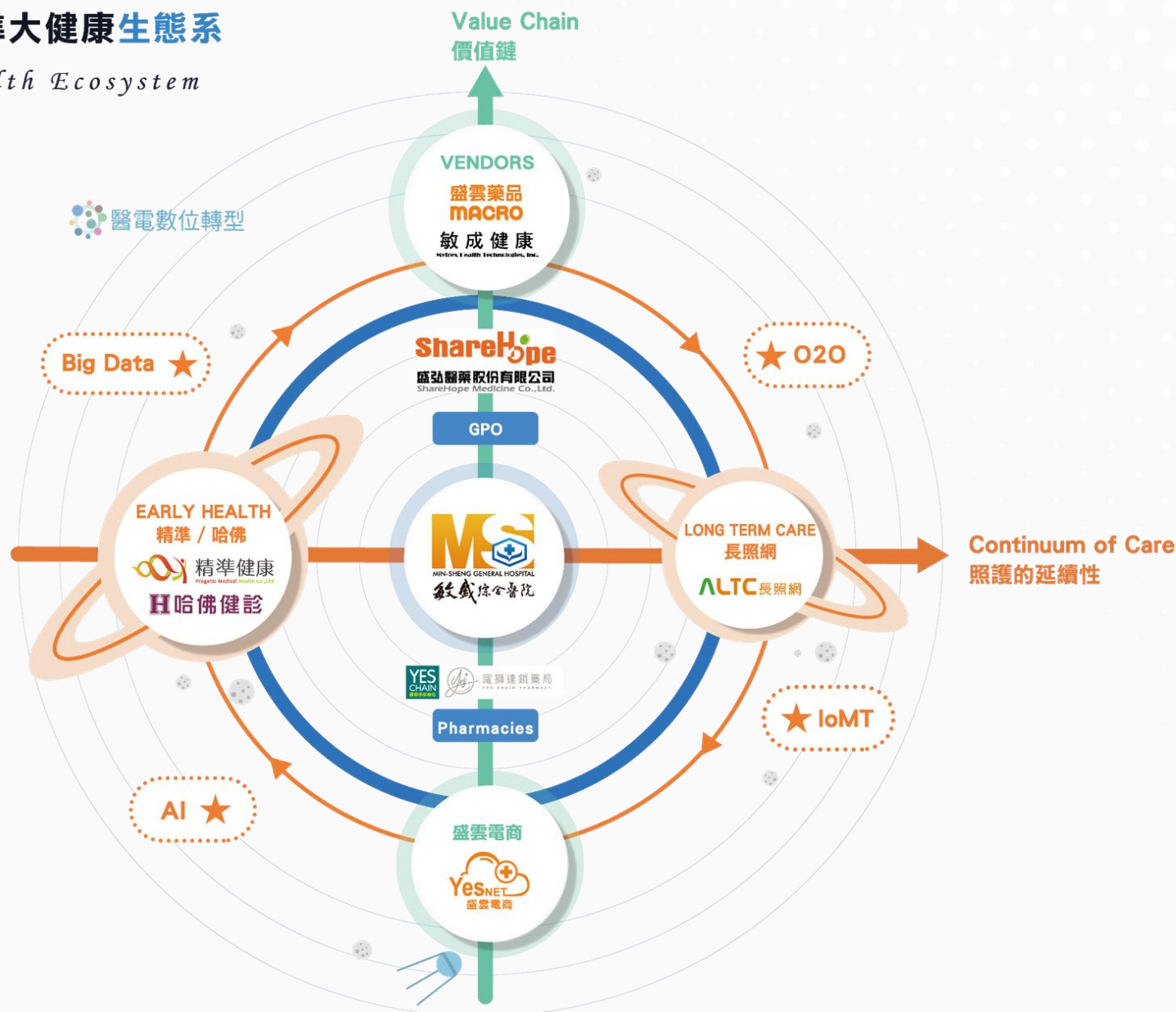
- 01. Summary of Operations
- 02. Financial Analysis
- 03. Major Reinvestment Business

01.

Summary of Operations

敏盛醫療體系 精準大健康生態系

Health Ecosystem



TAIPEI

台北

- Harvard Clinics x2
- YES Chain Pharmacies x43
- Digimed Co., LTD.

HSINCHU

新竹

- Hsinchu Science Park Clinic
- YES Chain Pharmacies x4

MIAOLI

苗栗

- Wei Gong Memorial Hospital
- YES Chain Pharmacies x1

TAICHUNG

台中

- Macro Co., Ltd.
- YES Chain Pharmacies x7

TAINAN

台南

- YES Chain Pharmacies x2
- Sheng Yo Clinic
- Harvard Clinic

TAOYUAN

桃園

- Min-Sheng Hospitals x3
- YES Chain Pharmacies x12
- Harvard Clinic
- Mytrex Health Tech.
- Smart Medical Clinic
- Healthy Residence
- Ai Wei Mei Anti-Aging Center

CHANGHUA

彰化

- YES Chain Pharmacies x2

CHIAYI

嘉義

- YES Chain Pharmacies x1

KAOHSIUNG

高雄

- YES Chain Pharmacies x2

KEELUNG

基隆

- YES Chain Pharmacies x1

NEW TAIPEI

新北

- YES Chain Pharmacies x24
- Yonghe Cardinal Tien Clinic
- Medzoneasia Co., Ltd.
- Techgroup Integrate Design Co., Ltd.

NANTOU

南投

- YES Chain Pharmacies x1

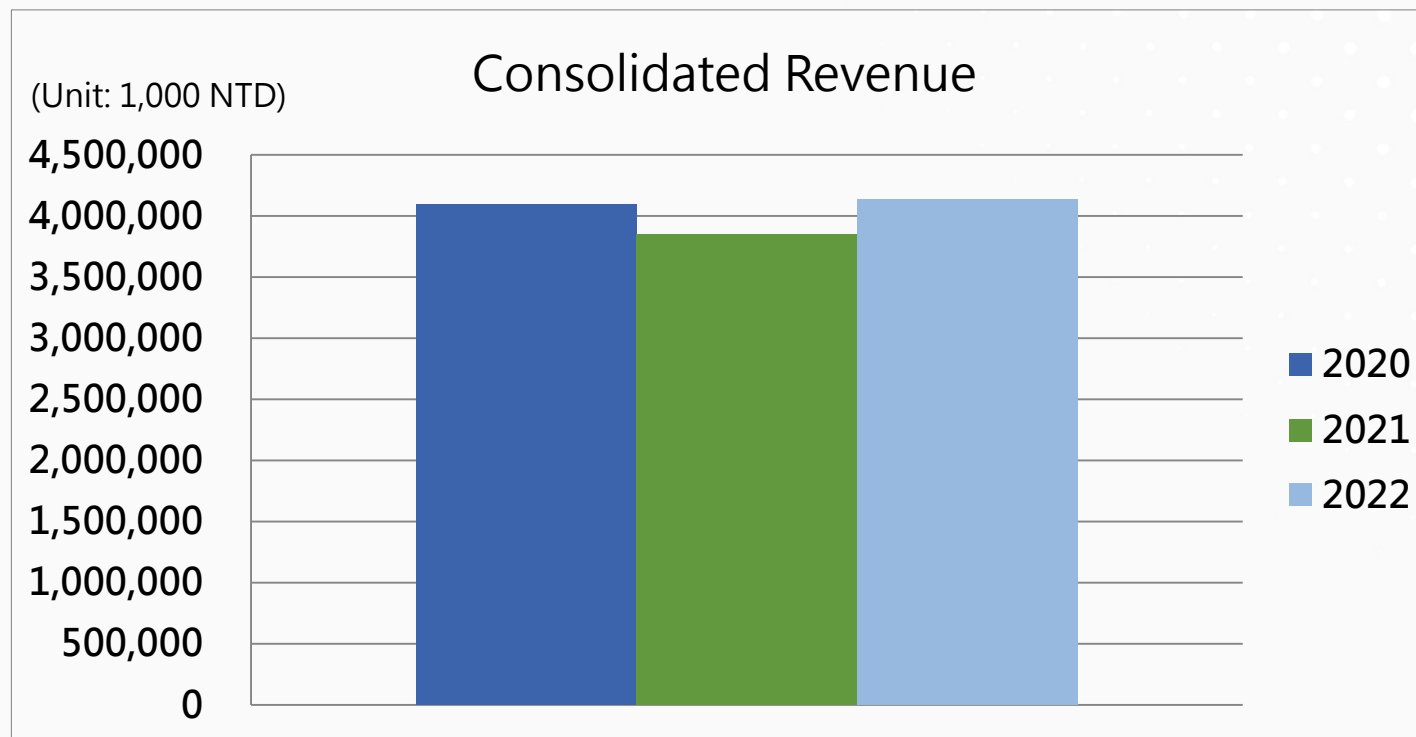
TAITUNG

台東

- YES Chain Pharmacies x1

02. Financial Analysis

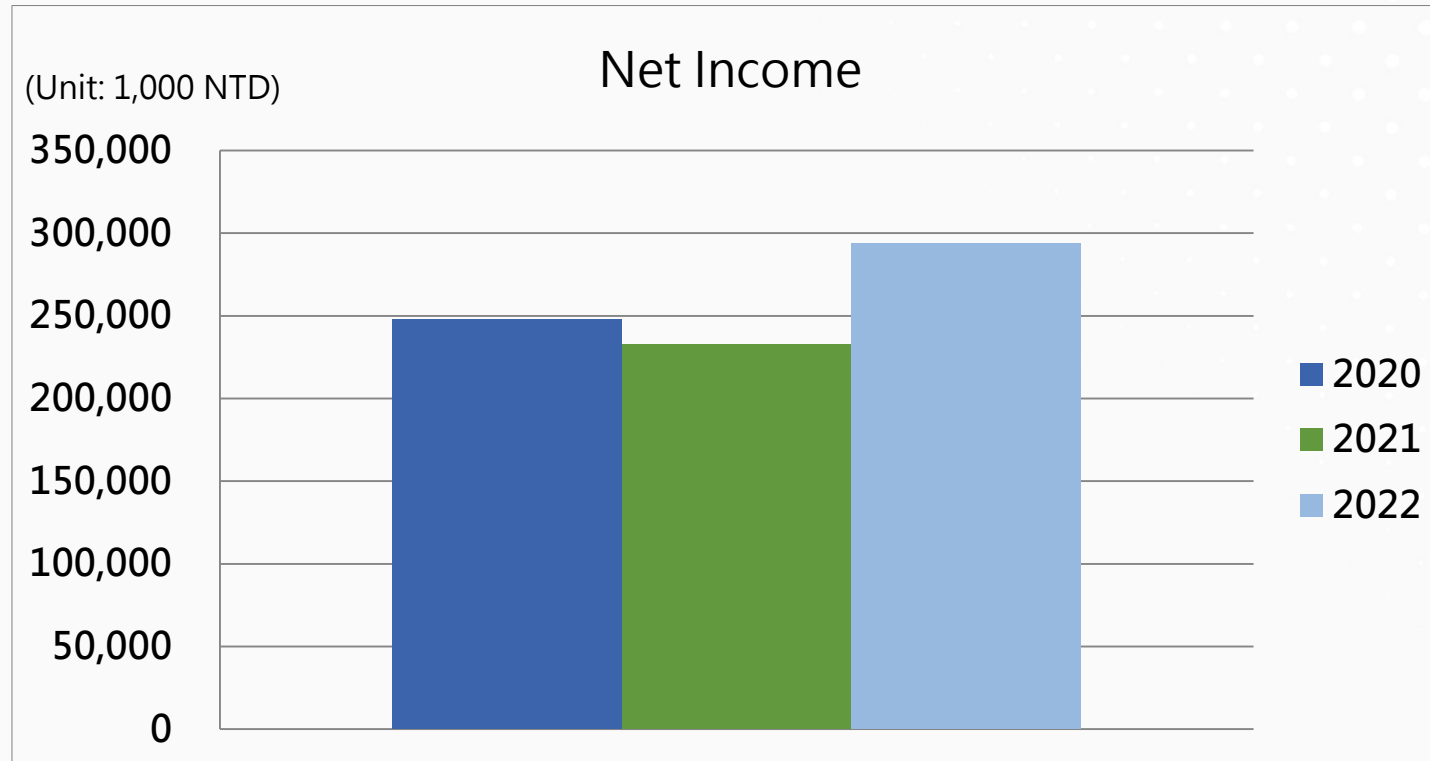
Consolidated Revenue in the past 3 years



	Total	Growth(%)
2020	4,098,876	31.21%
2021	3,850,027	-6.07%
2022	4,137,132	7.46%

- Revenue growth of 2022 has increased by 7.46% compared to same time in 2021.
- This was mainly attributable to the growth of the PCR inspection business of the Health Management Department.

Net income in the past 3 years



	Total	Growth (%)
2020	247,712	27%
2021	232,663	-6.08%
2022	293,946	26.34%

EPS in the past 3 years



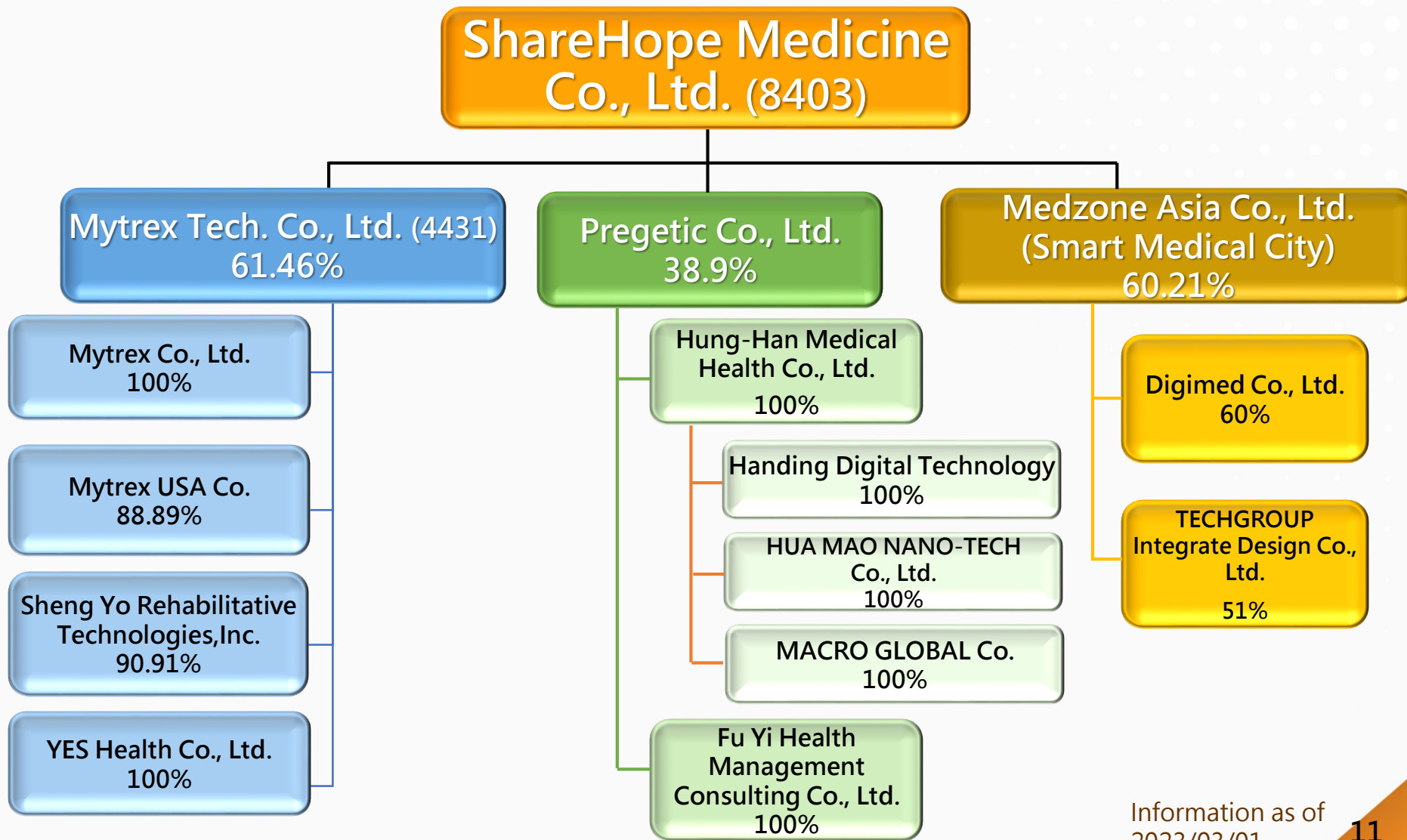
	Total	Growth(%)
2020	2.07	25.45%
2021	1.94	-6.28%
2022	2.45	26.29%

03.

Major Reinvestment Business

10

Merged Company Organization Chart



Information as of
2023/03/01

Mytrex Health Technologies Inc.

Mytrex Health and Reinvested Companies

Mytrex Health

Mytrex Health Technologies, Inc.

Date Established	1990/08/06
IPO	2011/08/30
Paid-in capital	NTD \$365,355 thousand
Main Business	M&A/Investment

Mytrex

1. Stock hold : 100%
2. Spin-off

Mytrex Inc.

Date Established	2021/10/22
IPO	2021/11/05
Paid-in capital	NTD \$120,000 thousand
Main Business	Nonwoven Filter/Technological Materials/Medical Clothes

Sheng Yo Rehabilitative Technologies

1. Stock hold : 90.91%
2. Established in 2022 Q1

Sheng Yo Rehabilitative Technologies

Date Established	2022/2/14
Location Established	Lin'an Rd., Tainan City
Paid-in capital	NTD \$22,000 thousand
Main Business	Smart Medicine, recovery, Health check-up

Mytrex USA

Stock hold : 88.89%

YES Health

Stock hold : 100%

YES Health

Date Established	2015/2/5
Location Established	Ziqiang North Road, Guishan District, Taoyuan City
Paid-in capital	NTD \$60,350,000 thousand
Main Business	Chain pharmacy operation

Mytrex

1. The research and development unit focuses on sound-absorbing cotton and HEPA high-efficiency materials for vehicles and pushes them to the market according to the planned schedule.
2. The business unit actively expands the non-filter material application market and develops new business expansion opportunities.
3. Business, production, and research and development share responsibility, and implement budget control and execution to achieve the goal.
4. Seek various cooperation opportunities and the possibility of activating idle equipment to maximize the company's benefits.
5. Continuously optimize production lines and improve production quality, and achieve optimal production line configuration.

Figure 1 displays five photographs of car interior components, each enclosed in a red rectangular frame. The components are labeled below their respective images:

- Headliners:** A photograph showing the interior roof of a car with brown leather seats.
- Door panels:** A photograph showing the interior door panel of a car.
- Instrument panels:** A photograph showing the dashboard and steering wheel area of a car.
- Pillars:** A photograph showing the interior pillar area of a car.
- Package trays:** A photograph showing the interior floor area near the front seats.



Missioncare

Sheng Yo Rehabilitative Technologies

Missioncare Sheng Yo Tainan

- In response to the strategic policy of the Missioncare medical system, we formed an alliance with Kaohsiung Changyou Medical to jointly establish Sheng Yo Rehabilitation Technology Co., Ltd. to carry out the medical and health development plan in southern Taiwan
- Key development projects: rehabilitation specialist clinics, professional health checkups, functional medicine and chain community pharmacies
- **2023. 2. 17 official grand opening**



Floors	Units
4、5	Sheng Yo Clinic
2、3	Harvard Check up Center (Tainan site)
1	Yes Chain Pharmacy
B1	Sheng Yo Rehabilitative Technologies





Sheng Yo Clinic

Smart consultation, technology services

Features

- Provide smart consultation service process
- Professional Adult Rehabilitation Postoperative Rehabilitation Children's Rehabilitation Early Care
- Occupational Therapy Physical Therapy Speech Therapy Sports Medicine
- Medical center level X-ray examination, musculoskeletal ultrasound examination
- Extracorporeal Shockwave Therapy, Ultrasound, American Chiropractic
- Hyaluronic acid injection, PRP autologous platelet plasma injection treatment

- ※ High-quality professional treatment team
- ※ New and advanced equipment
- ※ Accurate and intelligent diagnosis and evaluation
- ※ Comfortable and warm treatment environment
- ※ Unique customized special treatment





Harvard Check up Center

preventive medicine, health care

Features

- New equipment: Ultrasound/bone density/X-ray detection equipment
- Accurate testing: Various blood/cancer markers/gene/allergen detection
- Professional medical care: health consultation and report interpretation by specialist physicians, exclusive personal health management services
- Smart healthcare: Real-time understanding of health status and comprehensive health risk assessment through an intelligent interface
- Comfortable space: a warm inspection field like home, where you can relax.

Professional Services Provided

- Corporate Group Health Check
- Exclusive personal health plan
- labor health check
- pre-marital health check
- Comprehensive genetic testing
- Allergen Testing
- Functional Medicine and Special Outpatient Clinics





YES Chain

Medical care, smart perscription

◆ Health insurance special pharmacy

- Provide professional pharmaceutical care services
- Professional pharmacy consultation and medication safety guidance
- Actively develop health promotion and participate in public health business



- ◆ YES Chain Pharmacy is committed to the persistence of smart technology, promotes phased application to physical pharmacies combined with smart medical care, breaks away from the framework of traditional pharmacies, breaks through the limitations of time and space by integrating all health information, and returns services Professional essence, connecting health data, sharing health resources, and expanding health services

YES Health



YES Chain Company Introduction

Make
Pharmacy
Fun.

YES
Health

YES Health Co., Ltd.



NTD **1.2B**

2022 Operational
Revenue

NTD **60M**

Paid-in capital

203人

Employees

47%

Percentage of
stores holding
national
certification
licenses

Main Products

Health insurance
medicine

Medical care

Non-prescription
drugs

Skin care

Dietary
Supplement

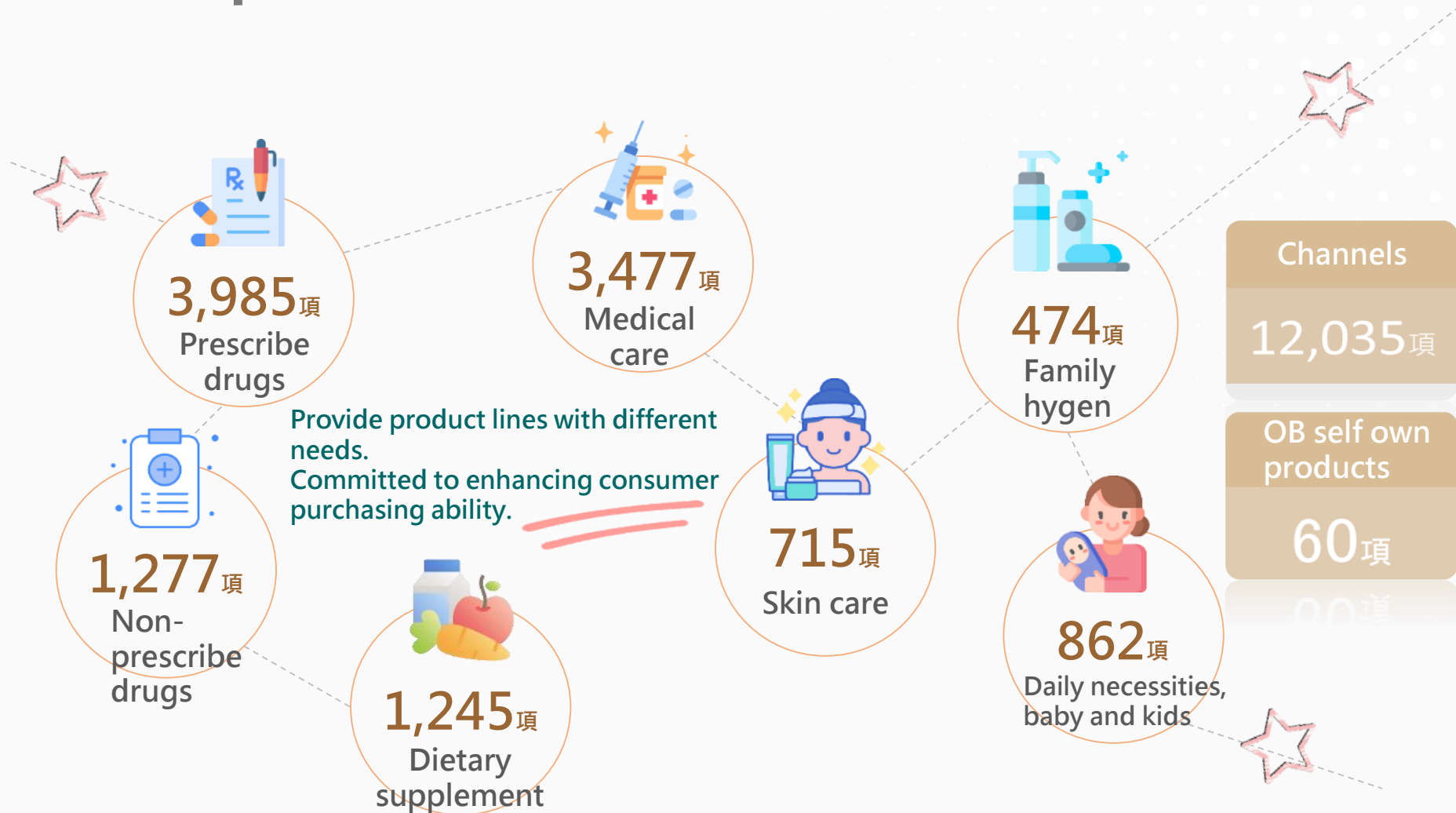
Daily
necessities

Locations in Taiwan

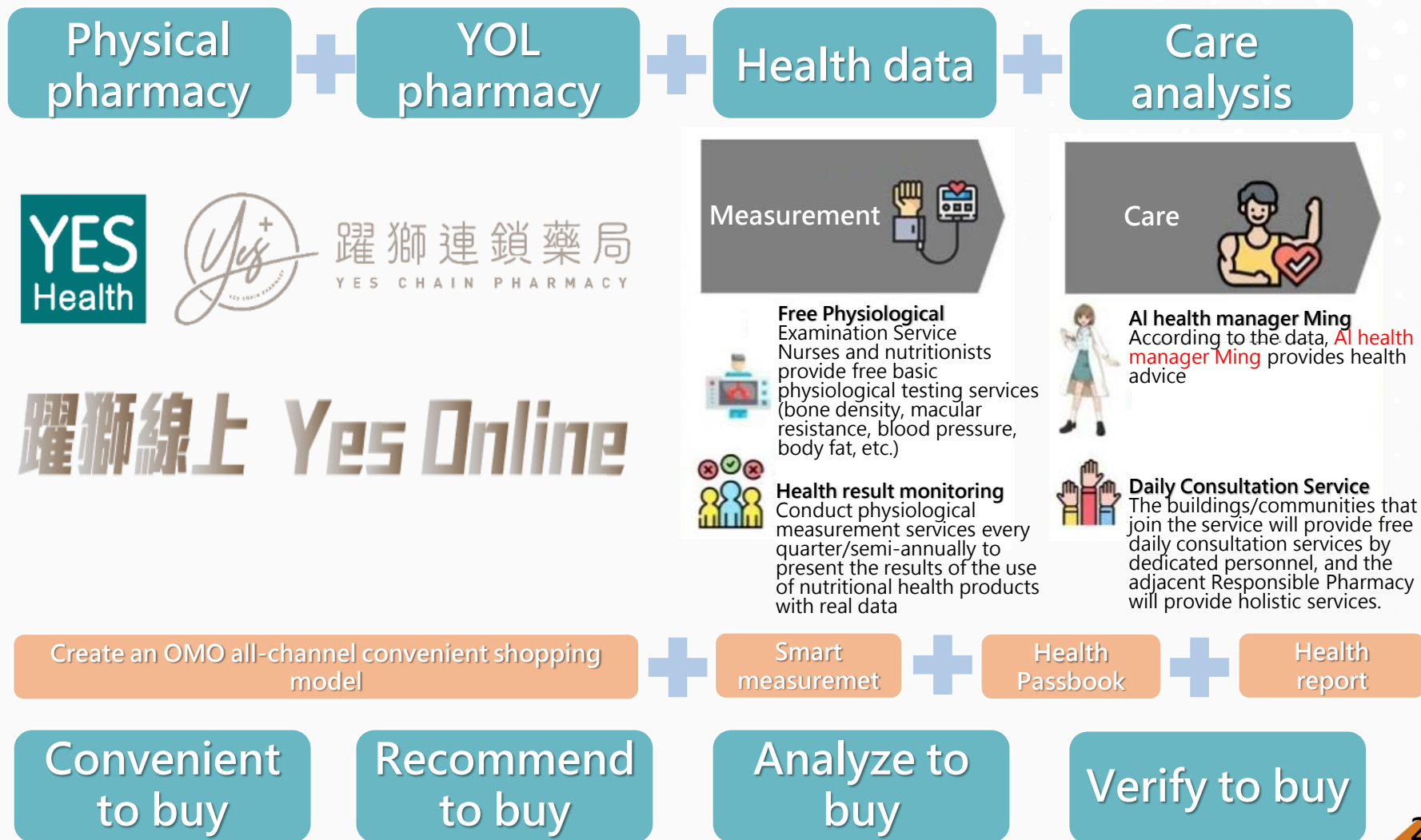


Taipei City	New Taipei City	Taoyuan City	Taichung City	Keelung City
43	24	12	7	1
Hsinchu City	Miaoli County	Changhua County	Nantou County	Chiayi City
4	1	2	1	1
Tainan City	Kaohsiung City	Taitung County	<div>34</div> <div>Direct store</div>	
2	2	1		
			<div>67</div> <div>Join store</div>	

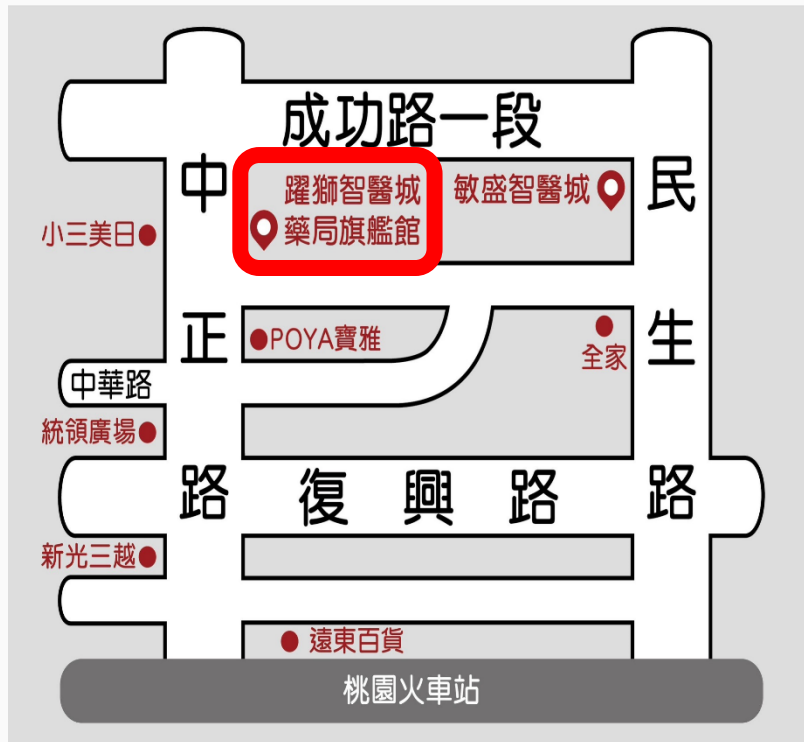
Scope of Services



Outlook for future development strategy



YES Chain Smart Medical City Flagship Store



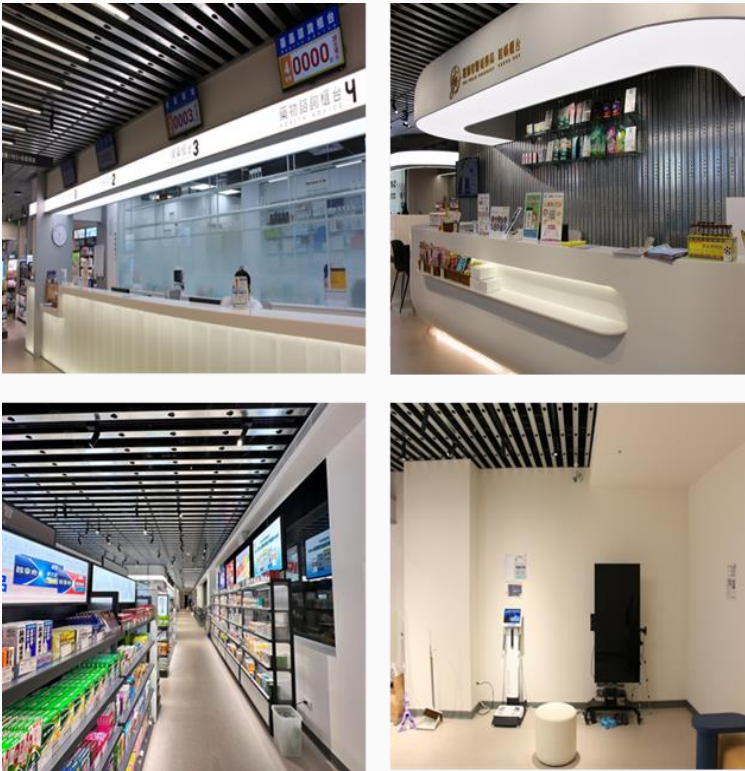
- Name: YES Chain Smart Medical City Flagship Store
- Address: 66 Zhongzheng Road, Taoyuan District, Taoyuan City



躍獅連鎖藥局
YES CHAIN PHARMACY



YES Chain Smart Medical City Flagship Store



- **Yueshi Wisdom Dunbei Store** is innovatively designed by Li Panlong, a chief designer
- Made of artificial stone and **capsule elements**
- Combined with **XFOODIE healthy low-GI drinks** and desserts, customers can enjoy food without worrying about gaining weight
- Link to **Missioncare Smart Medical Clinic**, introduce high-tech testing equipment, and be guided by many **attending physicians of various specialties** from Minsheng Hospital
- Connected with the **HIS system**, **professional pharmacists** could provide instructions individually
- Combining the concept of **sports technology and life**, and co-branding sports peripheral products with the local team-**Taoyuan Pilots**, it is hoped that consumers who love sports can also understand the importance of **preventive health care**

PREGETIC MEDICAL HEALTH

Five areas in the scope of services

Precise Detection

Early detection of disease risk detection

Precise Prevention

Use health monitoring data to customize health management

Precise Diagnosis

A method for early and correct detection of diseases

Precise Treatment

Taking personalized medicine as the core to prescribe the right medicine

Precise Care

More convenient and intelligent holistic care

- Source : National Development Council [Constructing Taiwan as a benchmark country for global precision health and scientific and technological epidemic prevention], International Institute of Obstetrics, Industrial Technology Research Institute, compiled with sincerity (2021.12)

Group Business Ecosystem

Medical Management Group

Health check-up clinic
management/online
consultation platform

Healthcare group

Brand/Product/
Channel member
operation

Information platform group

health management
system/
Information service

Genetic Data Group

Gene (telomere)
database
commercial operation



哈佛E院



SNQ
Applied



哈佛醫研
HARVARD NUTRITION LAB

World Quality
Awards Applied



HealthBee

Long distance
clinic
consultation

HEALTH on LINE

Health Helper
APP



ISO15189
Approved



Telomere
database patent
application

4 Areas of the Operation

Big Data Database

POINT 1

- Establish a database of clinic medical records
- Late-onset Alzheimer's risk detection
- Familial Hypercholesterolemia Testing

Channel Expansion

POINT 2

- Linked Pharmacy Access
- Video diagnosis and treatment
- line service

Harvard Brand

POINT 3

- Expand new sites
- Harvard Tainan
- Harvard Anti-Aging Center

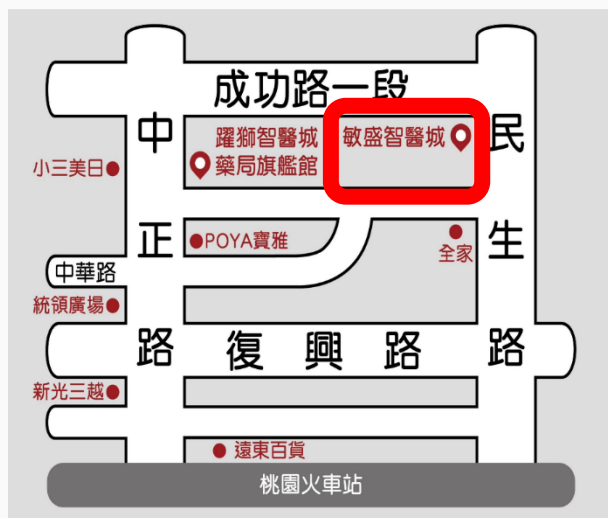
Cross-industry cooperation

POINT 4

- Telecom operator
- electronics industry
- life insurance industry
- Pharmaceutical industry

Medzone Asia (Smart Medical City)

Smart Medical City



Address : 107 Minsheng Road,
Taoyuan District, Taoyuan City



盛雲康寓

HEALTHY RESIDENCE

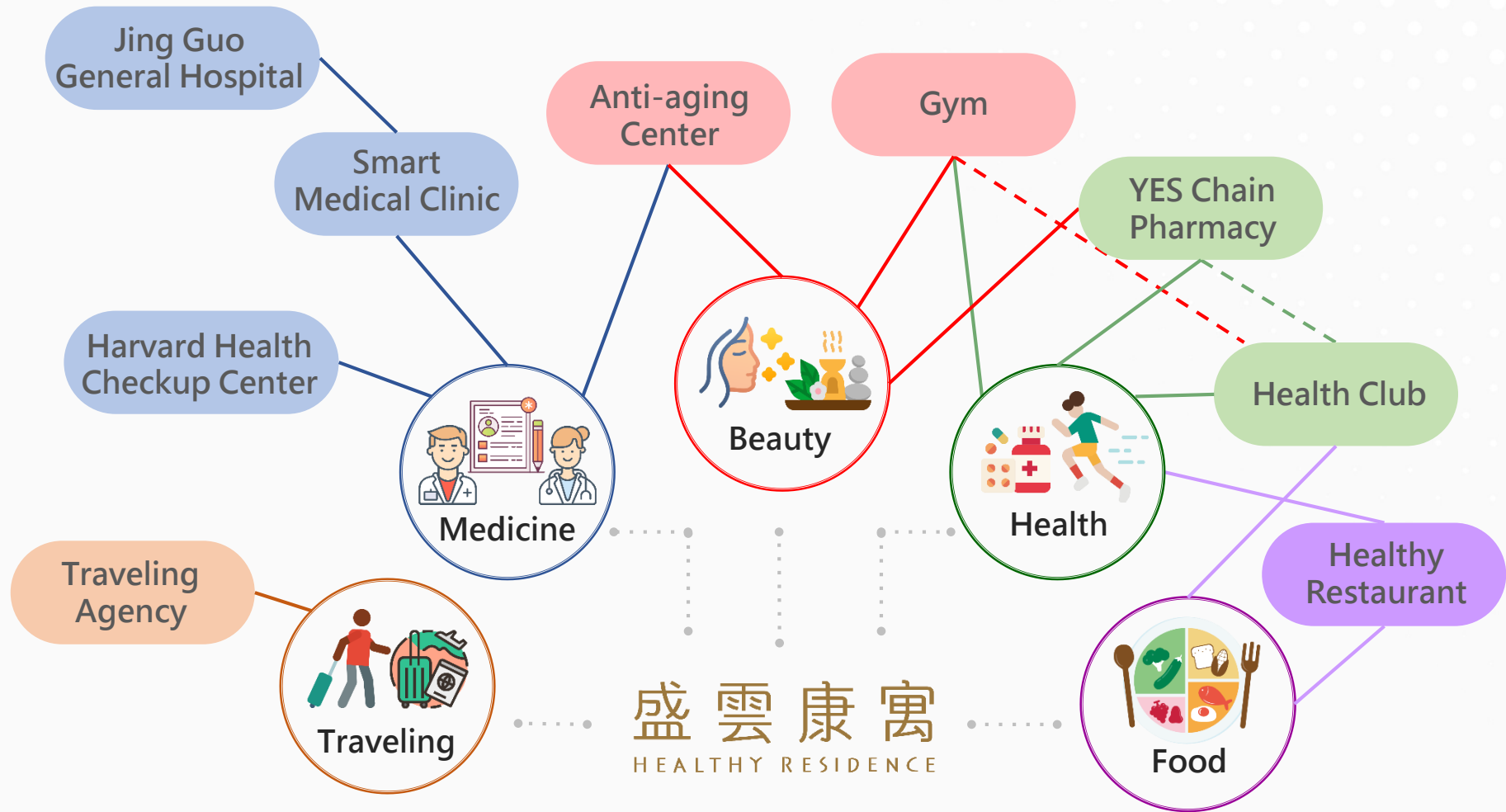
Live **Smart** + Keep **Healthy** + Enjoy **Club**

New experience of enjoying smart healthy accommodation

Medical professional brand plus service
Experience the well-being of physical and mental health



Service and System of Healthy Residence



Missioncare Smart Clinic

Health Insurance Outpatient
Clinic/Self-paid Outpatient Clinic

Internal medicine
Chest Medicine
Cardiology
Neurology
Endocrinology
Gastroenterology
Nephrology

Surgical
Orthopedics
Urology
Gynecology
Plastic

3月15日起

試營運

智醫城門診

	星期一	星期二	星期三	星期四	星期五	星期六
早	骨科 謝義禾	泌尿科 蔡芳生 骨科 蕭詠全 神內科 張峻源	骨科 謝義禾 胸內科 葉步盛	泌尿科 蔡芳生 腎臟內科 洪國欽	心內科 劉秉一 神內科 張峻源 內分泌 莊強	泌尿科 蔡芳生 內分泌 林軒維
午	胸內科 葉步盛	內分泌 林軒維 泌尿科 朱元中	神內科 張峻源 腸胃內科 劉承昆	骨科 蕭詠全 內分泌 莊強	心內科 劉秉一 腸胃內科 劉承昆	
晚	心內科 劉秉一	內分泌 林軒維	泌尿科 蔡芳生		內分泌 林軒維	

智醫城自費門診

	星期一	星期二	星期三	星期四	星期五	星期六
午	醫美 劉祥耀 泌尿科 蔡芳生	特別門診 張峻源 泌尿科 蔡芳生		泌尿科 蔡芳生 醫美 劉祥耀		
晚	醫美 劉祥耀	特別門診 張峻源	特別門診 林軒維	醫美 劉祥耀		



掛號與交通資訊



桃園市桃園區民生路107號4樓

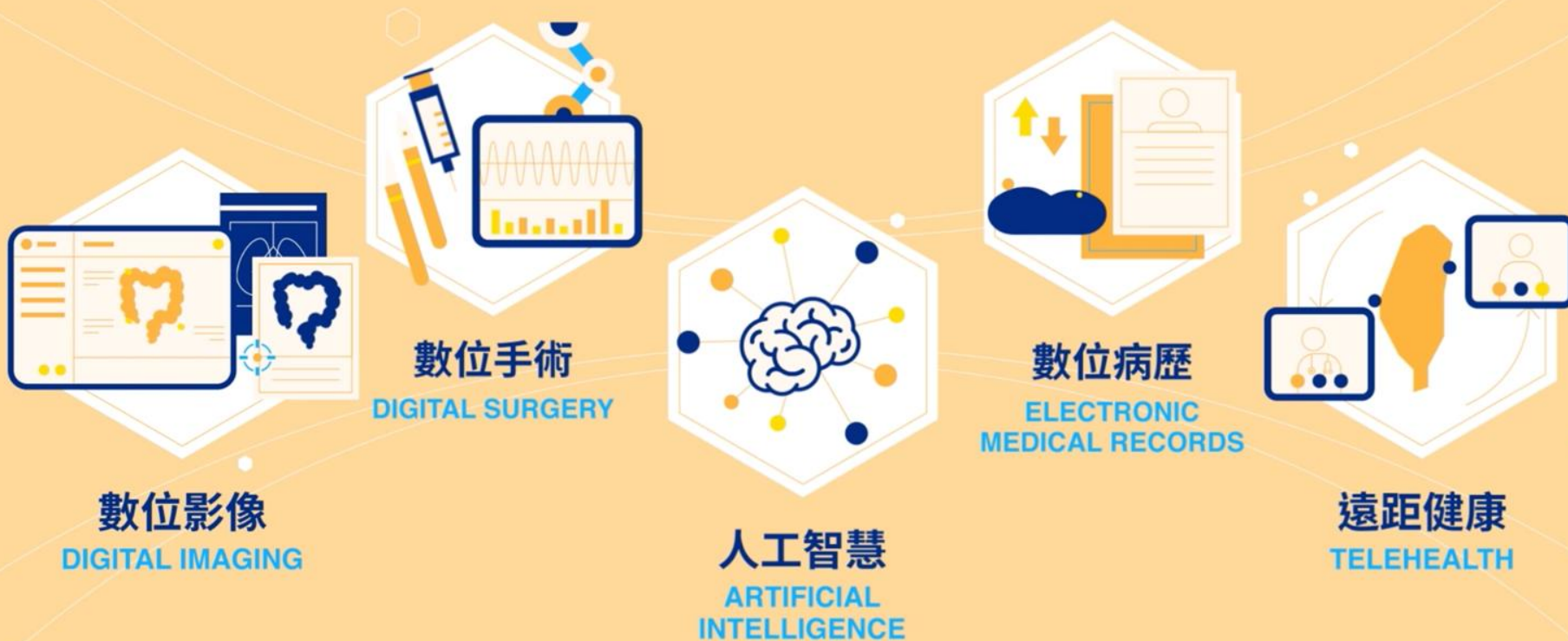
線上預約掛號

智醫城資訊

Missioncare Smart Medical City- 3 Features

1. Establish the highest quality digital medical outpatient center in Taiwan
2. Provide medical center-level health care services for all ages
3. Enjoy the comfort of star-rated hotels and future medical experience

Smart Medical City-5 factors



4-5F Smart Medical Center

(Health Insurance Clinic)



6F Smart Medical Center

(Ai Wei Mei Health Management)





運動健身鏡

Smart Medical City App



Please scan the QR code
to download

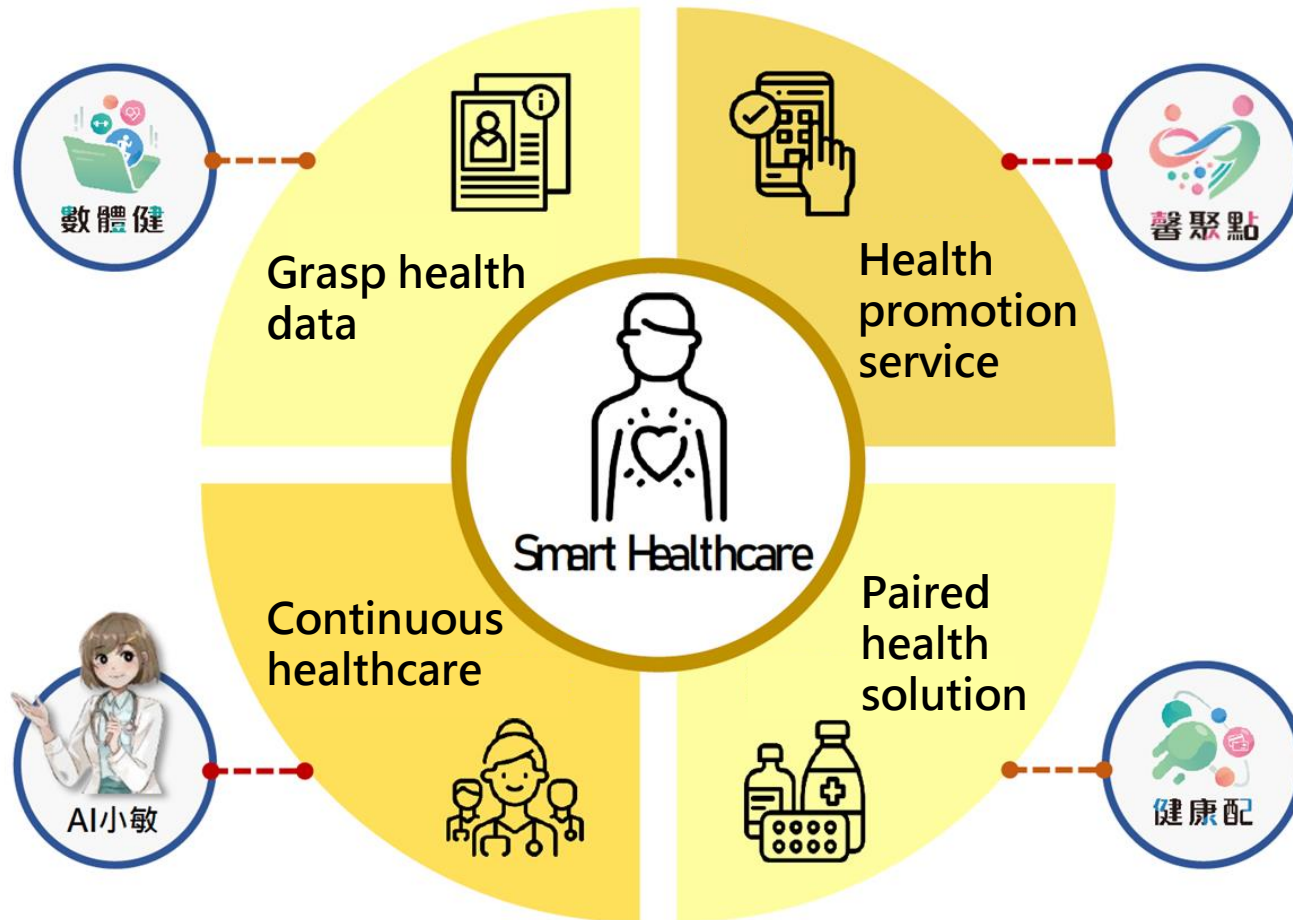


智醫診所



會員中心

Objective of Developing Smart Medicine : to establish a health ecosystem for everyone.



Thank you for listening